

UNIT, DIRECT SUPPORT, AND GENERAL SUPPORT MAINTENANCE
REPAIR PARTS AND SPECIAL TOOLS LIST
TRUCK, 5-TON, 6X6, M809 SERIES TRUCKS (DIESEL)

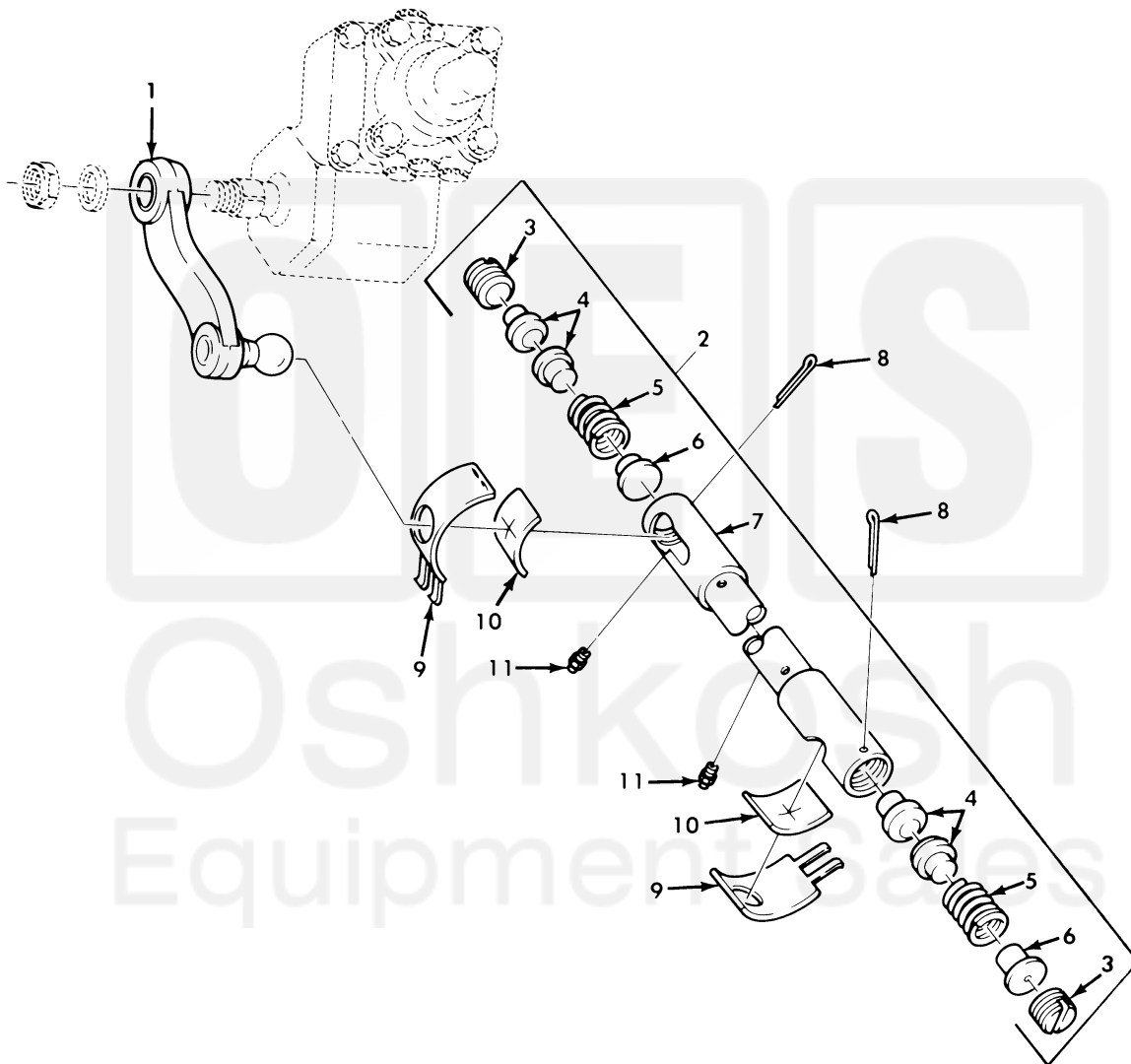


Figure 211. Drag Link and Pitman Arm Assembly.

(1) ITEM NO	(2) SMR CODE	(3) NSN	(4) CAGEC	(5) PART NUMBER	(6) DESCRIPTION AND USABLE ON CODE (UOC)	(7) QTY
GROUP 1401 MECHANICAL STEERING GEAR ASSEMBLY						
FIG. 211 DRAG LINK AND PITMAN ARM ASSEMBLY						
1	PAOZZ	2530-00-134-4630	19207	11664538	ARM, STEERING GEAR.....	1
2	PFOOO	2530-00-134-4629	19207	11664551	DRAG LINK, STEERING.....	1
3	KFOZZ		72210	7034622	.PLUG PART OF KIT P/N 5703709.....	2
4	KFOZZ		19207	7034634	.SEAT PART OF KIT P/N 5703709.....	4
5	KFOZZ		19207	7034623	.SPRING PART OF KIT P/N 5703709....	2
6	KFOZZ		19207	7034624	.RETAINER PART OF KIT P/N 5703709..	2
7	XAOZZ		19207	11664572	.DRAG, LINK.....	1
8	PAOZZ	5315-00-013-7308	96906	MS24665-627	PIN, COTTER PART OF KIT P/N 5703709.	2
9	PAOZZ	2530-00-040-2229	19207	7369959	SHIELD PART OF KIT P/N 5703709.....	2
10	PAOZZ	5330-00-446-8651	19207	7348896	FELT, MECHANICAL, PRE PART OF KIT P/N 5703709.....	2
11	PAOZZ	4730-00-172-0028	96906	MS15003-4	FITTING, LUBRICATION.....	2

END OF FIGURE

